



SCHAFFER DRIVELINE, LLC
 FREDERICKTOWN, OHIO, USA 43019
 SERVICE REPLACEMENT PARTS LISTING

MODEL NO : 012AJ420-1

DATE ISSUED: 1/18/2008

DESCRIPTION: Axle Assembly, Rear

REVISION "D" 11/10/2015

KEY NO.	SCHAFFER PART NO.	QTY	DESCRIPTION
1	012CH345X	1++	Housing, Axle (W/ Idler Shaft)
2	012CH240	1++	Housing, Axle, Finished
3	012LK133	1	Kit, Detent
4	012HH122	1	Seal, Oil
5	012GV194-X	1	Assembly, Actuator
6	012SV118X	1	Assembly, Shift Rod
7	012HH128	3	Seal, Oil
8	012TA406-1X	1	Assembly, Tube
9	012TA407-1X	1	Assembly, Tube
10	070HM282	12	Screw, Flange Head
11	070HM251-1	8	Screw, Flange Head
12	514A7	4	Ring, Retaining
13	585971	2	Bearing, Ball
14	500024-6	2	Pin, Cotter
15	4171017	1	Assembly, Brake
16	4171018	1	Assembly, Brake
17	002SJ100	1	Neutral Switch
18	070HN218	8	Nut, Lock
19	012HN124	2	Nut, Hex Flange
20	012SR140-1	1	Shaft, Axle
21	527A3-1	8	Bolt, Wheel
22	012WA123	2	Drum, Brake
23	012HU145X	2	Hub Assembly, Wheel w/ Studs
24	012HM110-1	13	Screw, Flange Head
25	012HG145	1	Plug, Drain
26	012HN120	13	Nut, Lock
27	002HG101	1	Plug, Rubber
28	012HN140	1	Vent
29	012HP120	2	Pin, Dowel
30	585965	1*	Bearing, Ball
31	012GS307	1**	Shaft, Input
32	012LK134	1+	Kit, Shim
33	012HD111	1*	Bearing, Ball
34	012HD129	2*	Bearing, Ball
35	012HS121	2	Spacer, Flat
36	012HS126	1	Washer, Thrust
37	012HS125	1	Washer, Thrust
38	012GS202X	1**	Gear Assembly, Forward
39	012GS302	1	Gear, Clutch
40	012GS200	1	Shaft, Intermediate
41	012GS204X	1**	Gear Assembly, Reverse
42	012GS215	1**	Gear, Helical (Pinion)
43	012GS207X	1**	Gear Assembly, Idler
44	012HR128	1	Ring, Retaining
45	002HD111	2*	Bearing, Ball



SCHAFFER DRIVELINE, LLC
FREDERICKTOWN, OHIO, USA 43019
SERVICE REPLACEMENT PARTS LISTING

MODEL NO : 012AJ420-1

Page 2

46	012GS216	1**	Gear, Helical (Ring)
47	012DA107X	1	Assembly, Differential
48	012HN138	4	Nut, Lock
49	012HM128	4	Bolt, Hex
50			
51	527A6-1	2	Bolt, Hex
52	012SR140-2	1	Shaft, Axle

REVISION LOG:

REVISION "A" 9/30/2009

ITEM #15 WAS 012WD135-1X

ITEM #16 WAS 012WD135-2X

REVISION "B" 10/07/2009

ITEM #15 WAS 012WD116-1X

ITEM #16 WAS 012WD116-2X

REVISION "C" 4/30/15

ITEM #15 WAS 012WD119-1X

ITEM #16 WAS 012WD119-2X

REVISION "D" 11/10/2015

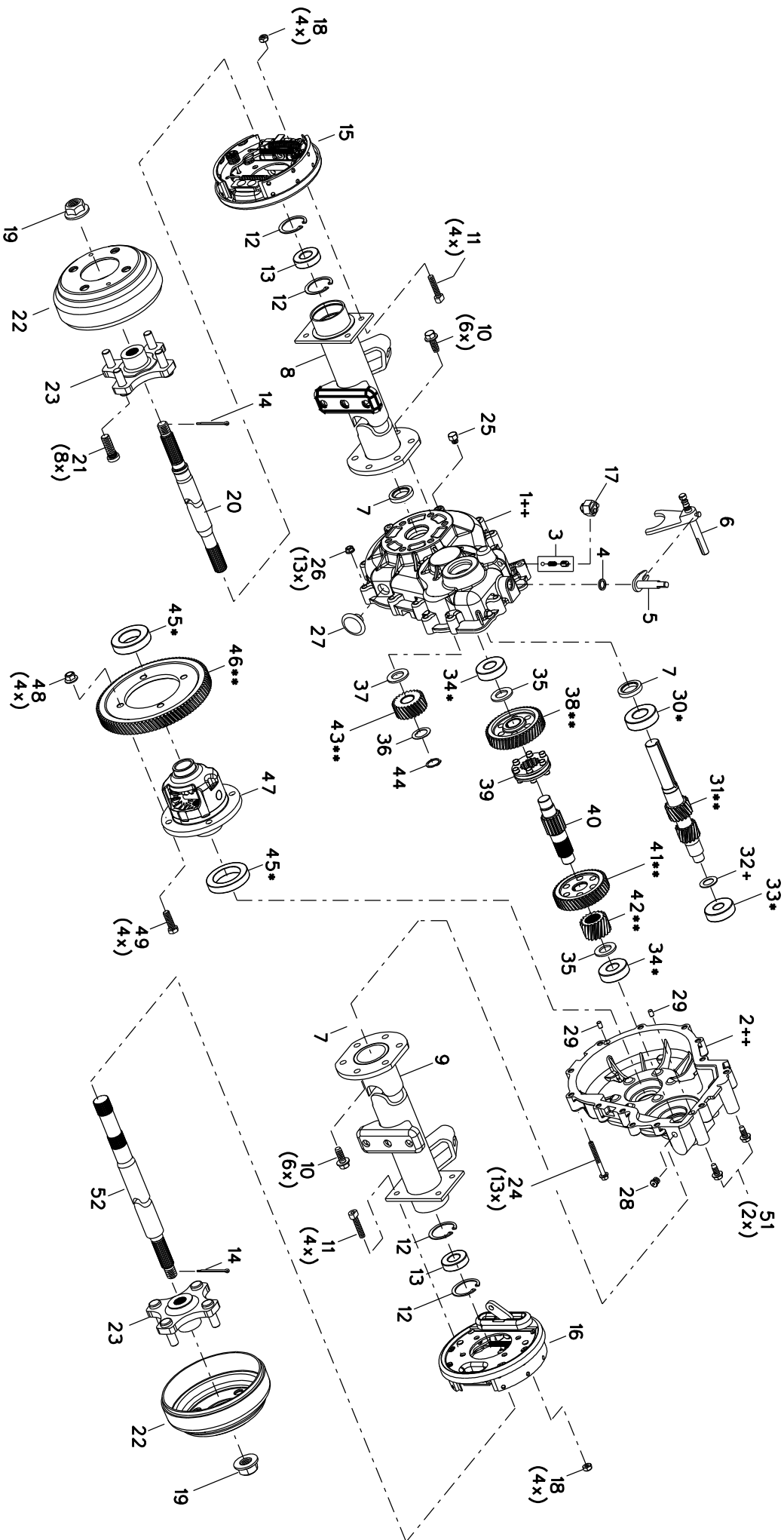
ITEM #5 WAS 012GV164-X

ITEM #17 WAS 5803

ITEM #27 WAS 41356

ITEM #45 WAS 585994

DATE ISSUED: 1/18/2008
 REVISION **A** 9/30/2009
 REVISION *B* 10/07/2009
 REVISION *C* 4/30/15
 REVISION *D* 11/10/15



SCHAEFER
 DRIVELINE, LLC
 FREDERICKTOWN, OHIO

MODEL 012AJ420-1