

## FRONT RECEIVER HITCH (2WD & 4WD) These kits are ONLY used on full size UTVs

As illustrated below, this kit consists of:

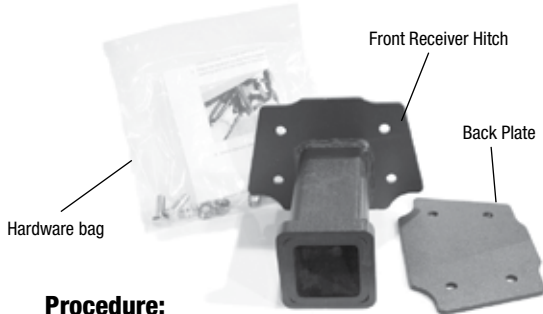
Front Receiver Hitch	Qty: 1
Back Plate	Qty: 1
3/8" x 1" Bolts	Qty: 4
3/8" Keps Nuts	Qty: 4

	<b>TOOLS REQUIRED</b>
	7/16" Wrench
	7/16" Socket and ratchet

As illustrated below, this kit consists of:

Front Receiver Hitch	Qty: 1
5/16 x 1 3/8 U-Bolts	Qty: 4
5/16" Nylock Nuts	Qty: 8
5/16" Flat Washers	Qty: 8

**Towing capacity: 1200 lbs. Tongue Load: 200 lbs.**



### 2WD UNITS 2-40723

### 4WD UNITS 2-40729



#### Procedure:

- 1 Place the four 3/8" x 1" bolts in the four holes in the receiver.
- 2 Place the back plate on the back side of the suspension mount with the bolt holes visible through the large opening in the suspension plate as shown in figure 1.
- 3 Place the receiver on the front suspension mount inserting the bolts through the large opening and into the holes in the back plate.
- 4 Place the receiver on the front suspension mount inserting the bolts through the large opening and into the holes in the back plate. Install the nuts and tighten as shown finished in figure 2 on page 2.

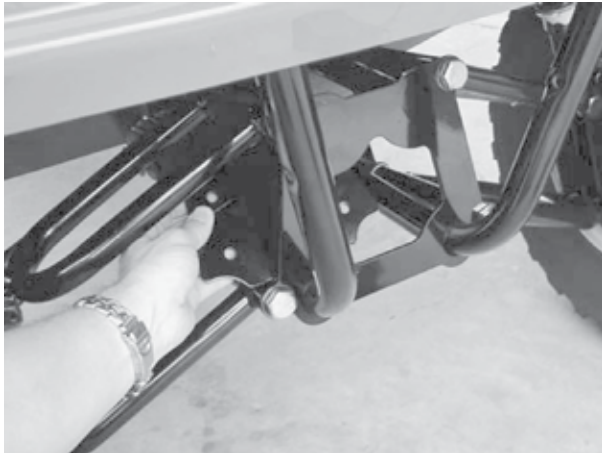


Fig. 1

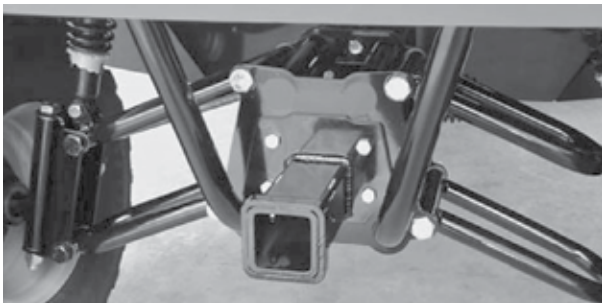


Fig. 2

#### Procedure:

- 1 Place the hitch between the two vertical front frame rails.
- 2 Insert U-bolts and install a washer and nut on each end.
- 3 Tighten nuts evenly so that the same amount of threads show on each side.



vertical front frame rails



## FRONT RECEIVER HITCH - 4WD (16648)

THIS KIT ONLY FITS 2017 AND LATER FULL SIZE UTVS

As illustrated below, this kit consists of:

Front Receiver Hitch	Qty: 1
5/16 x 1 3/8 U-Bolts	Qty: 4
5/16" Nylock Nuts	Qty: 8
5/16" Flat Washers	Qty: 8

**TOOLS REQUIRED**  
1/2" wrench    1/2" socket  
ratchet

**Towing capacity: 1200 lbs.    Tongue Load: 200 lbs.**



**1** Although not necessary, American LandMaster recommends removing the front bumper using a 1/2" socket and wrench. See figure 1.

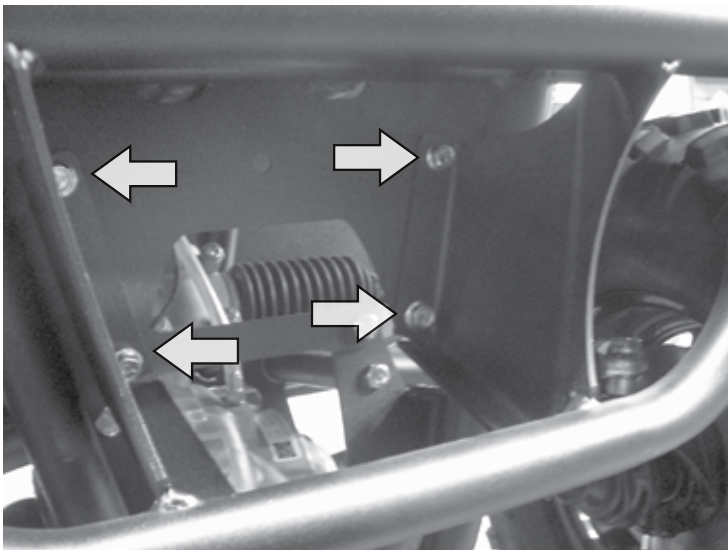


Fig. 1 Front bumper bolts

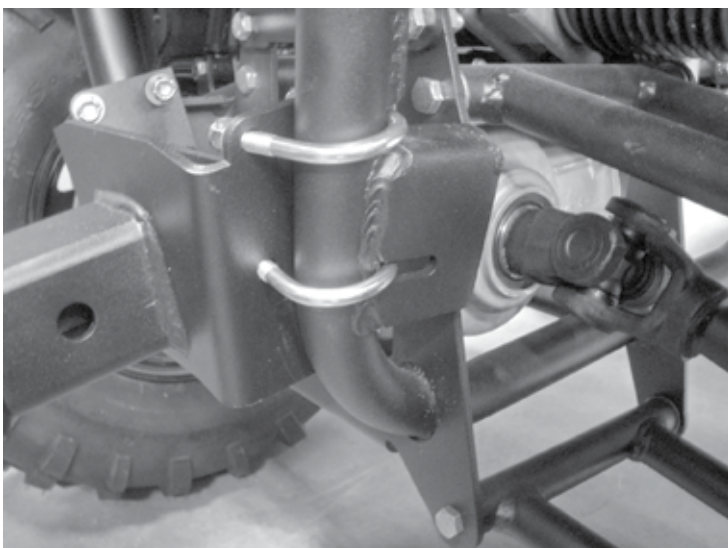


Fig. 2 Front receiver placement

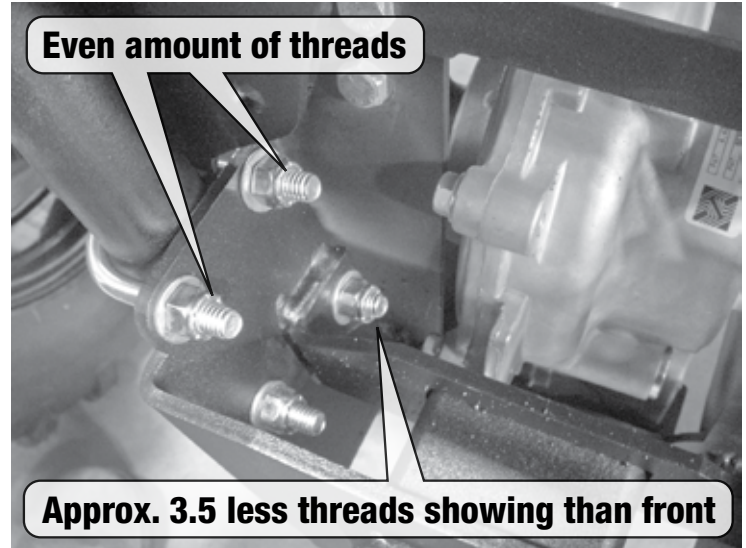


Fig. 3 U-bolt installation

- 2** Check the fit of the hitch between the two vertical front frame rails. Place the hitch between the two vertical front frame rails aligning the lower holes of the hitch with the slot in the front suspension bracket. The top set of holes should be just above the front suspension bracket. Insert U-bolts around the vertical frame rails and through the holes in the bracket. See figure 2 and NOTE below.
- 3** Tighten the nuts of the upper U-bolt nuts evenly with a 1/2" wrench/socket. The same amount of thread will show on each side. (torque to 12 ft\*lbs). See figure 3.
- 4** Tighten the nuts of the lower U-Bolts (torque to 12 ft\*lbs). If tightened evenly, there will be 3.5 less threads (3/16" length) exposed on the rear most leg of the lower u-bolt versus the forward leg. See figure 3.
- 5** Reinstall the bumper. (torque nuts to 17 ft\*lbs).

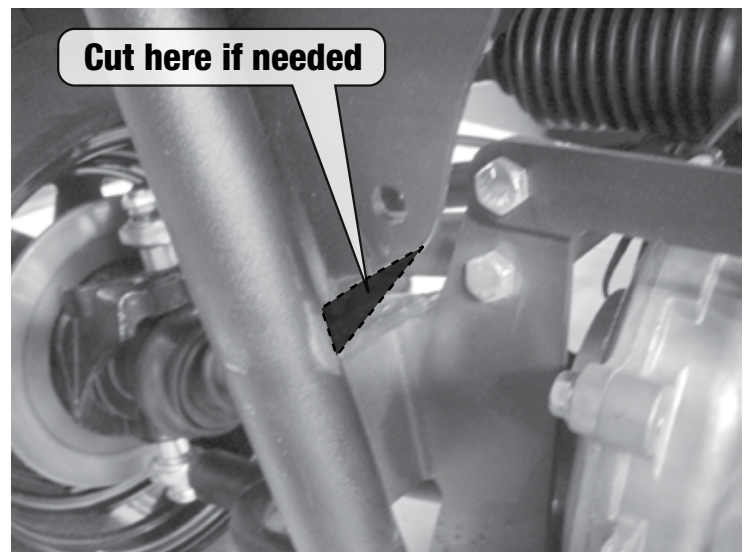


Fig. 4 Notch removal if necessary (see NOTE below)



**NOTE**

On a small percentage of units, the chassis bumper mounting plate may need to have a small area removed to provide clearance to the front hitch. Grind and/or cut as necessary and then cover any exposed metal with exterior spray paint.